



SPECIFICATIONS – SPÉCIFICATION - ESPECIFICACIONES

	BarriQ – Grand Pack	BarriQ – Petite Pack
Pack composition	8 to 11 pieces	6 to 9 pieces
Weight per pack (15% moisture content)	9.25kg/ 20.39lbs	6.16kg / 13.58lbs
Thickness	23mm / 0.9"	23mm / 0.9"
Length	Mix of 950mm, 600mm & 475mm / 37.40", 23.62" & 18.70"	Mix of 950mm, 600mm & 475mm / 37.40", 23.62" & 18.70"
Width	Varies from 50 to 100mm / 1.97" to 3.94" (Bordeaux Château barrel standard)	Varies from 50 to 100mm / 1.97" to 3.94" (Bordeaux Château barrel standard)
Seasoning	Natural, 24 months (from harvest to toasting)	Natural, 24 months (from harvest to toasting)
Toasting	Convection toast	Convection toast
Recommended contact time	9 to 18 months	9 to 18 months

Storage instructions

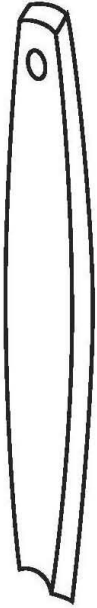
Avoid direct sunlight exposure

Store in a cool and dry place

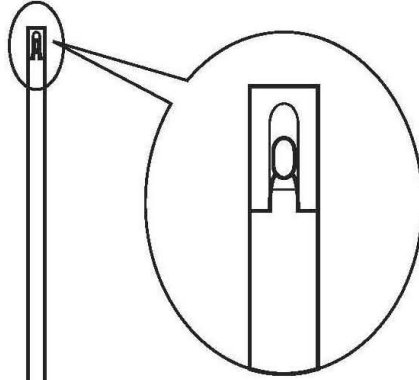
Do not expose to any chemical

PRODUCT INSTRUCTIONS - INSTRUCTIONS D'UTILISATION - INSTRUCCIONES DE USO

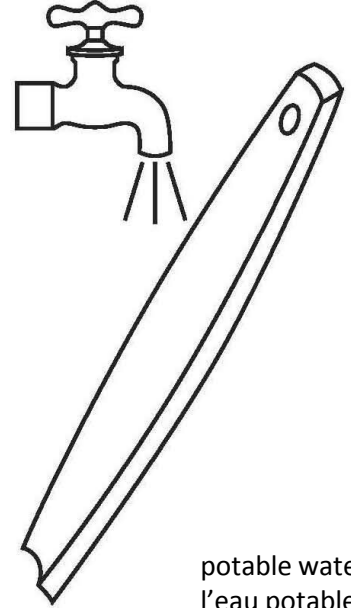
1



2

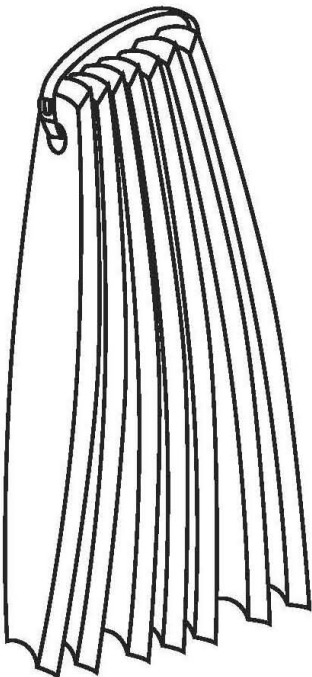


3

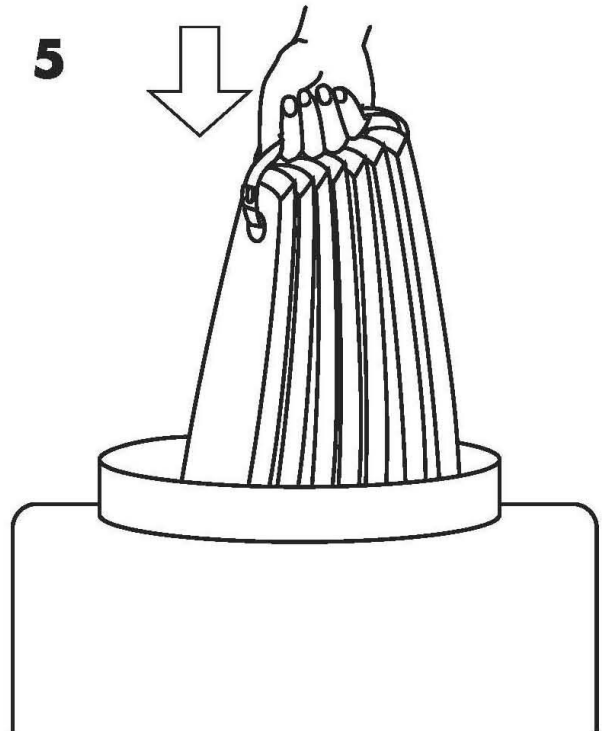


potable water
l'eau potable
agua potable


4




5



EXTRACTION DOSE RATES - TAUX D'EXTRACTION - TASAS DE EXTRACCION

EN		
VOLUME	6.16 kg / 13.58lbs (Petite Pack)	9.25 kg / 20.39lbs (Grand Pack)
1,000 Litres / 265 gal	6.16 g/l – 0.051lbs/gal 40% new barrel equivalent	9.25 g/l – 0.077lbs/gal 60% new barrel equivalent
1,500 Litres / 397 gal	4.10 g/l – 0.034lbs/gal 27% new barrel equivalent	6.16 g/l – 0.051lbs/gal 40% new barrel equivalent
2,000 Litres / 530 gal	3.08 g/l – 0.026lbs/gal 20% new barrel equivalent	4.62 g/l – 0.038lbs/gal 30% new barrel equivalent

FR		
VOLUME	6.16 kg / 13.58lbs (Petite Pack)	9.25 kg / 20.39lbs (Grand Pack)
1,000 Litres / 265 gal	6.16 g/l – 0.051lbs/gal 40% équivalent fût neuf	9.25 g/l – 0.077lbs/gal 60% équivalent fût neuf
1,500 Litres / 397 gal	4.10 g/l – 0.034lbs/gal 27% équivalent fût neuf	6.16 g/l – 0.051lbs/gal 40% équivalent fût neuf
2,000 Litres / 530 gal	3.08 g/l – 0.026lbs/gal 20% équivalent fût neuf	4.62 g/l – 0.038lbs/gal 30% équivalent fût neuf

ES		
VOLUMEN	6.16 kg / 13.58lbs (Petite Pack)	9.25 kg / 20.39lbs (Grand Pack)
1,000 Litros / 265 gal	6.16 g/l – 0.051lbs/gal 40% equivalente a tonel nuevo	9.25 g/l – 0.077lbs/gal 60% equivalente a tonel nuevo
1,500 Litros / 397 gal	4.10 g/l – 0.034lbs/gal 27% equivalente a tonel nuevo	6.16 g/l – 0.051lbs/gal 40% equivalente a tonel nuevo
2,000 Litros / 530 gal	3.08 g/l – 0.026lbs/gal 20% equivalente a tonel nuevo	4.62 g/l – 0.038lbs/gal 30% equivalente a tonel nuevo